

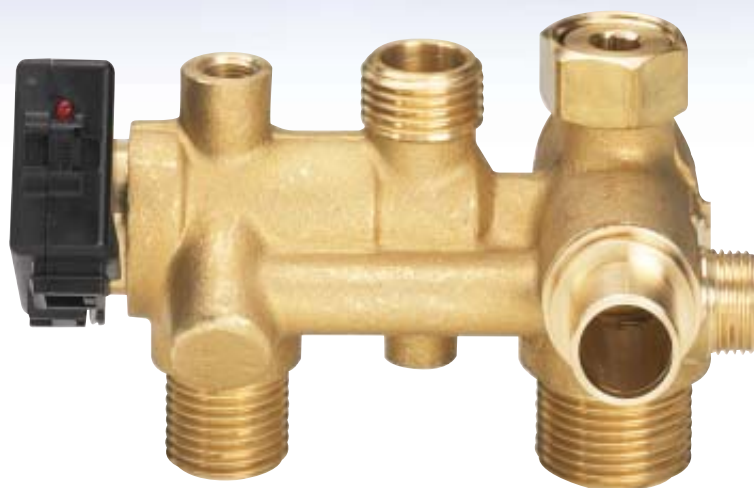
CIRCUITI IDRAULICI PER CALDAIE CON  
SCAMBIATORE BITERMICO

MOD.

15AS55

Gruppo ritorno con flussostato sanitario ad effetto Hall  
senza riempimento

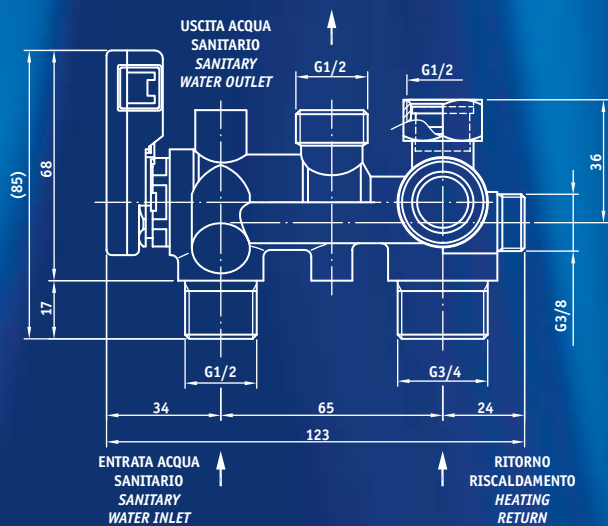
*Return manifold with Hall effect sanitary flow sensor,  
without filling tap*



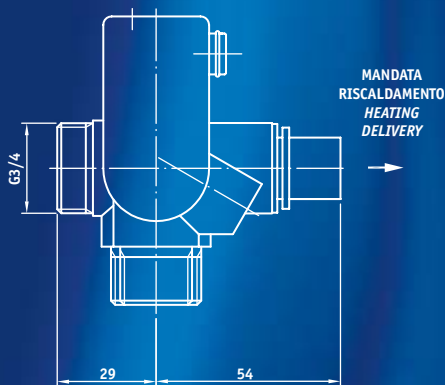
 **fugas**

  
ISO 9001:2000

  
Net



RITORNO BY-PASS  
BY-PASS RETURN

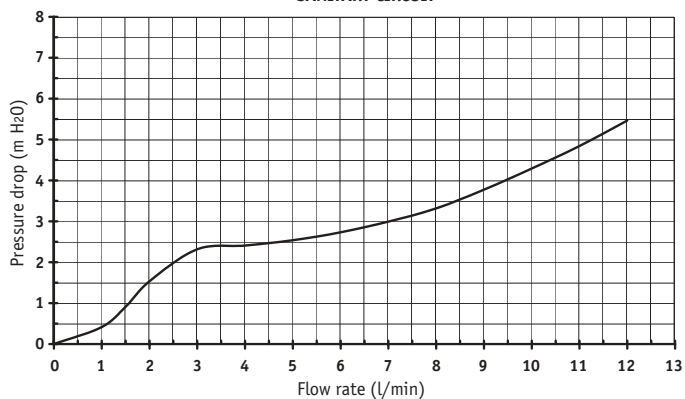


## DATI TECNICI – TECHNICAL DATA

- Pressione minima acqua sanitaria 0.2bar  
*Minimum pressure sanitary water 0.2bar*
- Portata minima di azionamento 2.5 l/min ±0.3  
*Switching flow rate 2.5 l/min ±0.3*
- Portata massima di spegnimento 1.7 l/min  
*Releasing flow rate 1.7 l/min*

- Rivelatore di flusso ad effetto Hall con filtro (regolatore di portata su richiesta)  
*Flow detector (Hall effect sensor) with filter (flow regulator on request)*
- By-pass automatico  
*Automatic by-pass*
- Raccordo vaso d'espansione  
*Expansion tank connection*
- Raccordo pompa  
*Pump connection*
- Raccordo valvola di sicurezza  
*Safety valve connection*

CIRCUITO SANITARIO  
SANITARY CIRCUIT



La curva rappresenta valori tipici / The curve represents typical performance.